

# CDC SAN FRANCESCO BERGAMO

U.O. NEUROLOGIA

Cdcd

Centro disturbi del movimento

# Equipe

- Dr. Massimo Moleri ( neurologo resp. U.O.)
- Dr.ssa Anna Micheli (neurologa)
- Dr. Pietro Di Paolo (neurologo)
- Dr.ssa Francesca Cominelli (neurologa)
- Dr.ssa Rosa Demarco (neurologa)
- Dr.ssa Simona Rota Negroni (psicologa)
- Dr.ssa Erica Fiacconi (psicologa)

# U.o. Neurologia

- 14 posti letto accreditati
- Centro diagnosi cura demenze ( 1680 pazienti visitati 2022)
- Centro disturbi del movimento ( 619 pazienti visitati 2022)

# Diagnostica disponibile demenze

- Laboratorio analisi con diagnostica Liquorale demenze
- Neuroradiologia con Tc spirale e Rmn encefalo 1,5 tesla
- Servizio neuropsicologia ( esecuzione test diagnostici e supporto psicologico pazienti e caregivers)
- Convenzione diretta medicina nucleare

## Narrow Your Search

[Edit Search \(1\)](#)

## Search Results

Viewing 1-10 out of 3.098 studies

[Synonyms of conditions or disease \(22\)](#)

Selected (0)

[Download](#)

<input type="checkbox"/>	Study Title	NCT Number	Status	Conditions	Interventions
<input type="checkbox"/> 1	<a href="#">An Efficacy and Safety Study of INM-176 for the Treatment of Patients With <b>Alzheimer Type Dementia</b></a>	NCT01245530	Completed	<ul style="list-style-type: none"> <li><b>Alzheimer Type Dementia</b></li> </ul>	<ul style="list-style-type: none"> <li>Drug: Aricept</li> <li>Drug: INM-176</li> </ul>
<input type="checkbox"/> 2	<a href="#">Safety Study of Sargramostim in Treating Patients With Mild Cognitive Impairment Due to <b>Alzheimer's Disease</b></a>	NCT02667496	Withdrawn	<ul style="list-style-type: none"> <li><b>Dementia Alzheimer's Type</b></li> </ul>	<ul style="list-style-type: none"> <li>Drug: Sargramostim</li> <li>Drug: Placebo</li> <li>Drug: Florbetapir</li> </ul>
<input type="checkbox"/> 3	<a href="#">Effect of Different Doses of SAR 110894 on Cognition in Patients With Mild to Moderate <b>Alzheimer's Disease</b> on Donepezil</a>	NCT01266525	Completed	<ul style="list-style-type: none"> <li><b>Dementia Alzheimer's Type</b></li> </ul>	<ul style="list-style-type: none"> <li>Drug: SAR110894</li> <li>Drug: placebo</li> <li>Drug: Donepezil</li> </ul>
<input type="checkbox"/> 4	<a href="#">Effect of Virtual Reality on Balance and Gait Speed With <b>Alzheimer's Dementia</b></a>	NCT03928405	Completed	<ul style="list-style-type: none"> <li><b>Alzheimer's Dementia</b></li> </ul>	<ul style="list-style-type: none"> <li>Other: Exercise</li> <li>Other: Virtual reality device</li> </ul>

Advanced

Search results

Save

Email

Review > Lancet Neurol. 2007 Aug;6(8):734-46. doi: 10.1016/S1474-4422(07)70178-3.

# Research criteria for the diagnosis of Alzheimer's disease: revising the NINCDS-ADRDA criteria

Bruno Dubois <sup>1</sup>, Howard H Feldman, Claudia Jacova, Steven T Dekosky, Pascale Barberger-Gateau, Jeffrey Cummings, André Delacourte, Douglas Galasko, Serge Gauthier, Gregory Jicha, Kenichi Meguro, John O'brien, Florence Pasquier, Philippe Robert, Martin Rossor, Steven Salloway, Yaakov Stern, Pieter J Visser, Philip Scheltens

Affiliations + expand

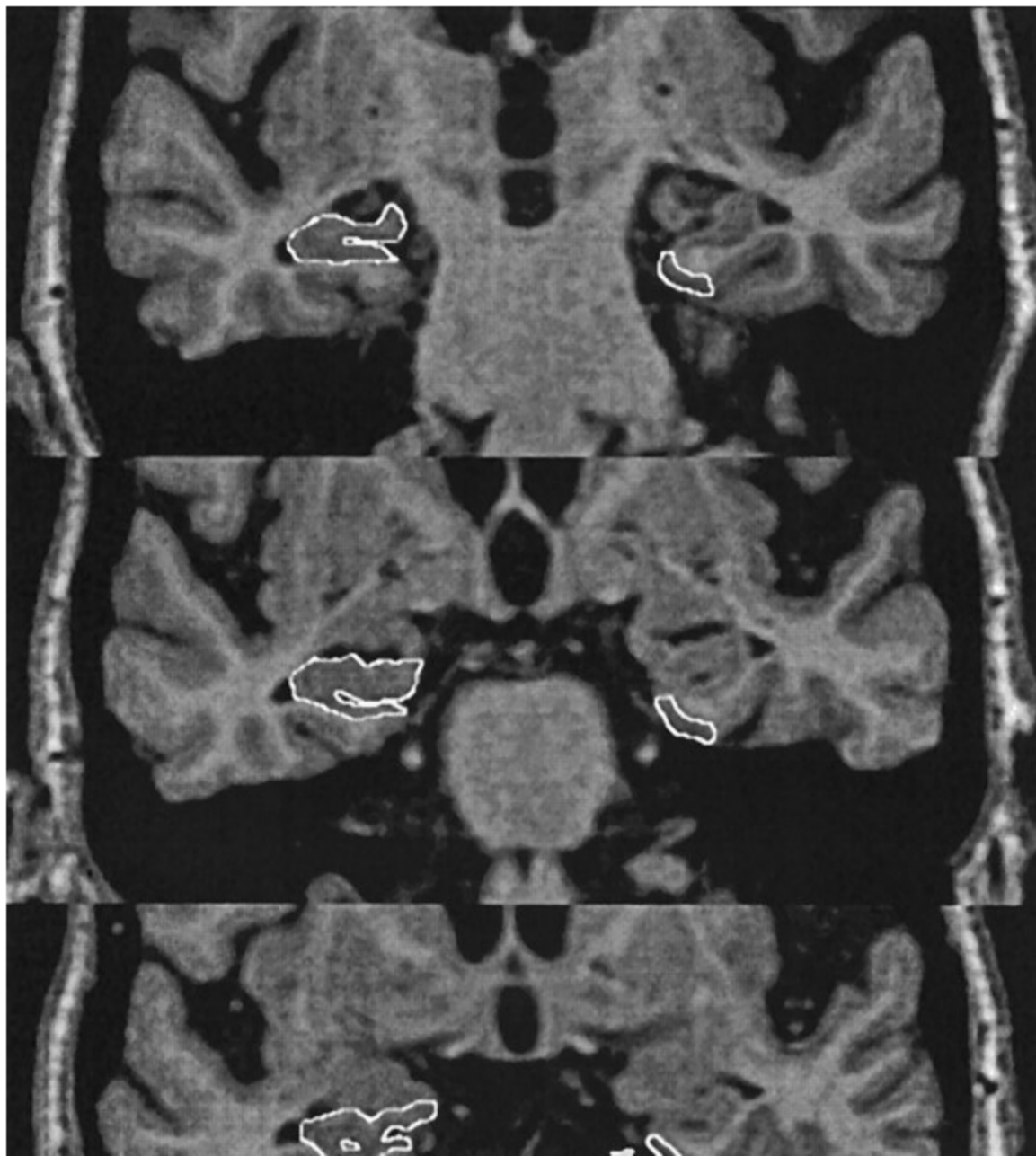
PMID: 17616482 DOI: 10.1016/S1474-4422(07)70178-3

## Abstract

The NINCDS-ADRDA and the DSM-IV-TR criteria for Alzheimer's disease (AD) are the prevailing diagnostic standards in research; however, they have now fallen behind the unprecedented growth of scientific knowledge. Distinctive and reliable biomarkers of AD are now available through structural MRI, molecular neuroimaging with PET, and cerebrospinal fluid analyses. This progress provides the impetus for our proposal of revised diagnostic criteria for AD. Our framework was developed to

PREV RESULT

4 of 362

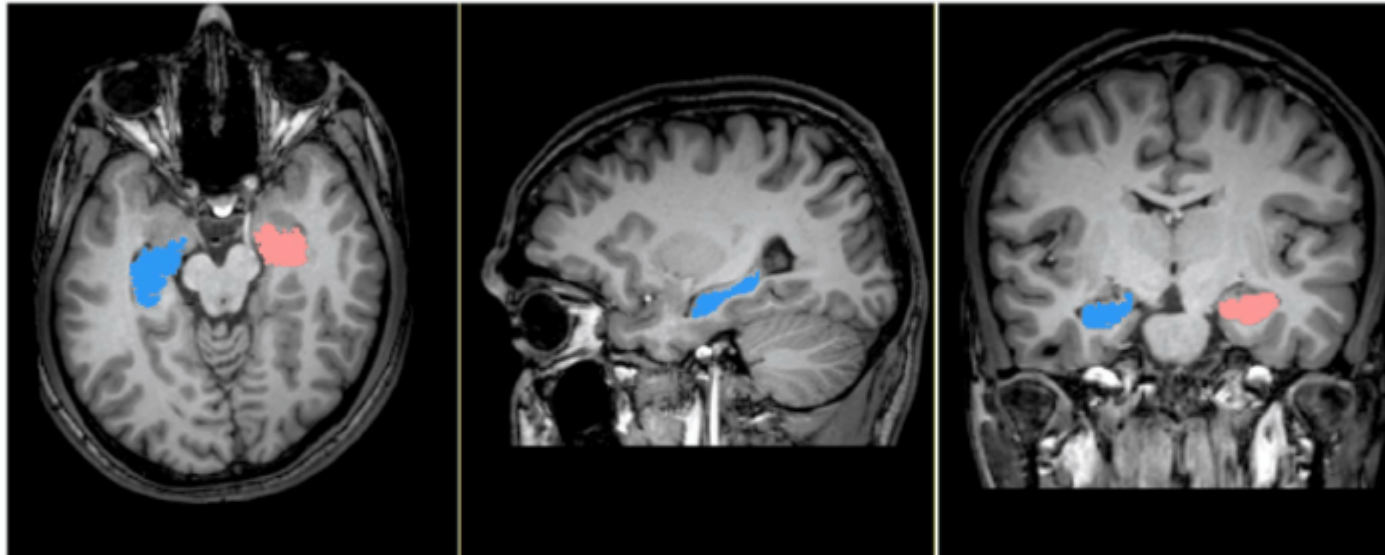


# Figure 1 - uploaded by [Sunil Vasu Kalmady](#)

Content may be subject to copyright.

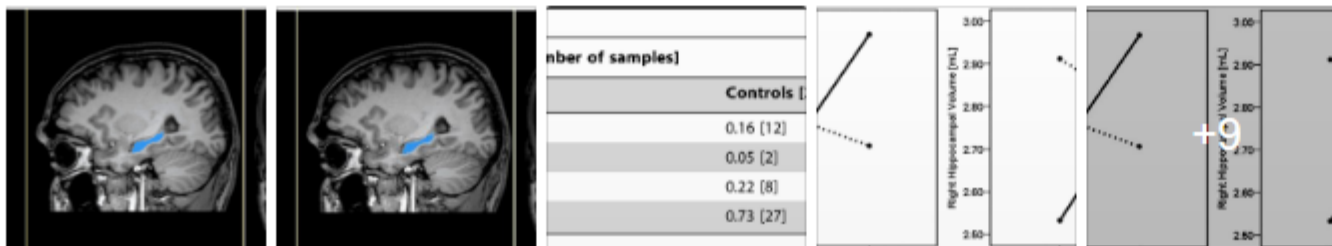
Download

View publication



Cerebral MRI depicting manual segmentation of hippocampus. Figure shows MRI with segmented hippocampus in axial, sagittal & coronal sections within 3D-Slicer software interface. doi:10.1371/journal.pone.0096021.g001

[Source publication](#)



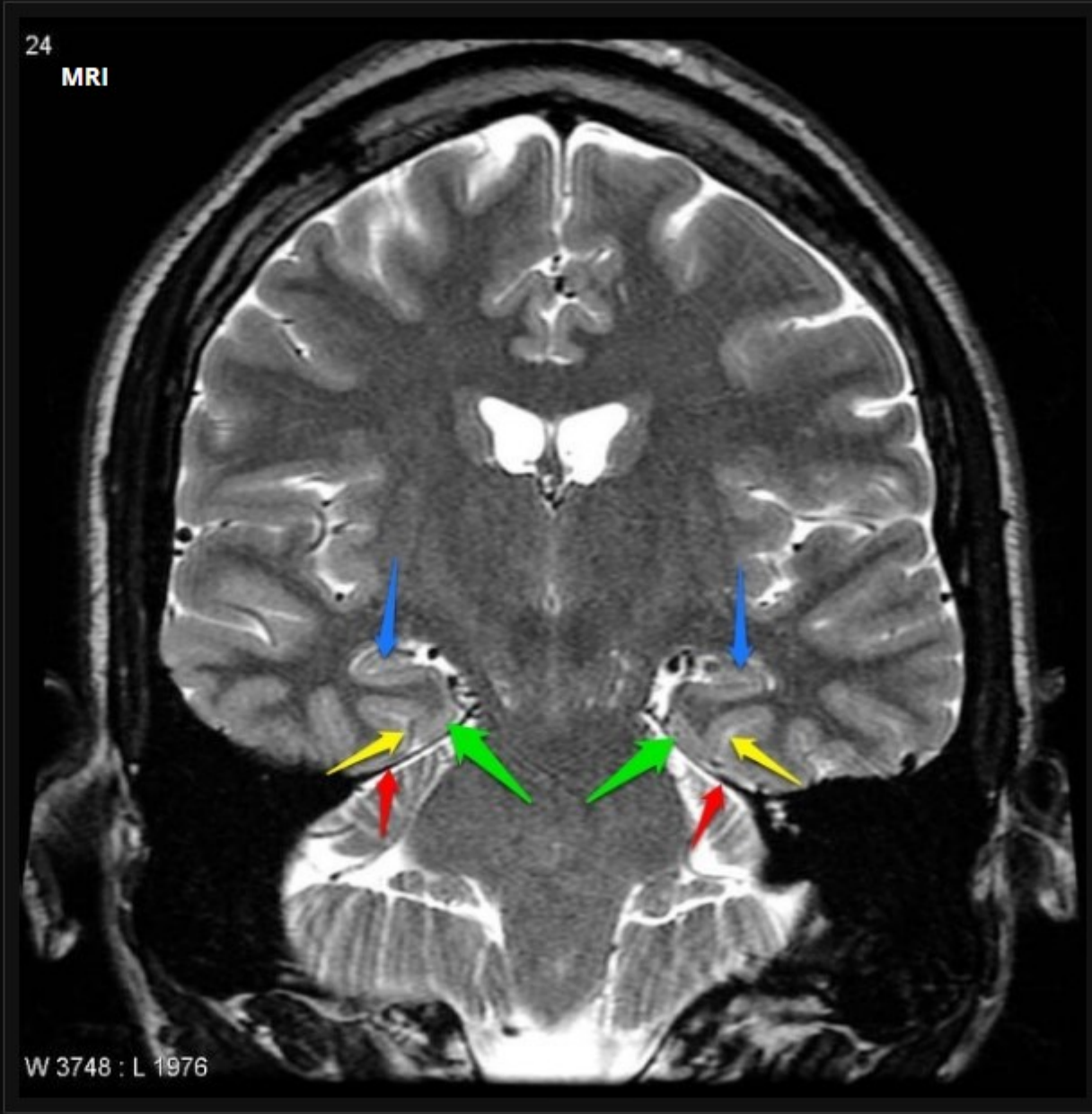
Join Rese  
research

- 20+ mill
- 135+ mi
- 2.3+ bill



24


MRI



W 3748 : L 1976



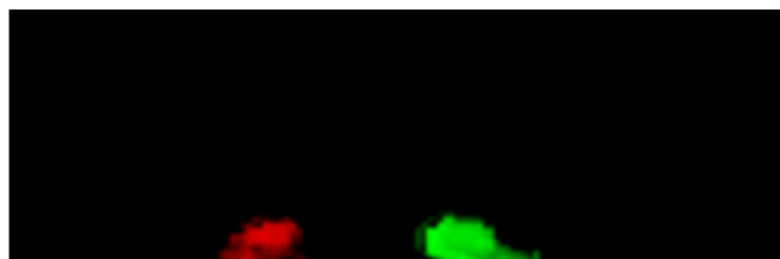
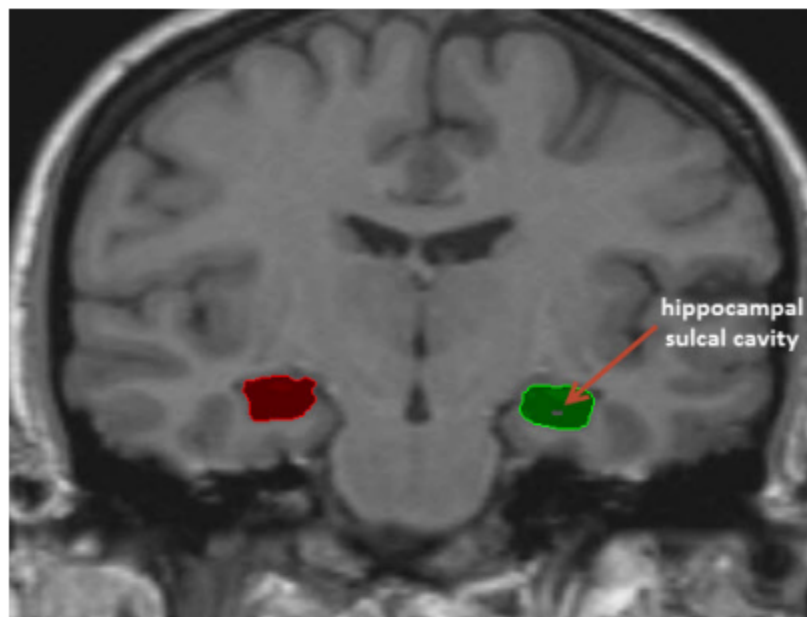
## ANALYZEPRO HIPPOCAMPAL VOLUME ASSESSMENT GUIDE

A hippocampal sulcal cavity<sup>33-35</sup> appears on one of these slices, the segmentation of which can be more clearly seen by toggling the display using the Toggle Region Display button. 

To exclude a region from the hippocampus object, the Freehand Draw tool (under the Manual tab) can be used to assign such a cavity to the Original object.

An example rendering of the segmented hippocampi is shown below.

*Note: Hippocampal subregions such as the tail can be manually segmented by adding further objects and assigning*



# Diagnostic performance of hippocampal volumetry in Alzheimer's disease or mild cognitive impairment: a meta-analysis

[European Radiology](#) volume 32, pages6979–6991 (2022)

[Ho Young Park](#), [Chong Hyun Suh](#), [Hwon Heo](#), [Woo Hyun Shim](#) & [Sang Joon Kim](#)

- Our meta-analysis demonstrated good diagnostic performance of hippocampal volumetry for AD or MCI. Entorhinal cortex volumetry might have superior diagnostic performance to hippocampal volumetry. However, due to a small number of studies, the diagnostic performance of entorhinal cortex volumetry is yet to be determined.